

### Atithi Devo Bhava

Atithi Devo Bhava means the guest is equal to the gods. Rajasthan is extremely rich in its culture and traditions. The guest in Rajasthan are treated with extreme respect. Rajasthan is famous for the hospitality they offers to the guests.

The exhibition focuses on the exhibits of four categories, panyaro, baithak, kitchen spaces and resting space. Further the baithak can be subcategorized into aliya, panihaara, floor seating, gadi masnad, bajot, paat, chowki, diwan and charpoy.

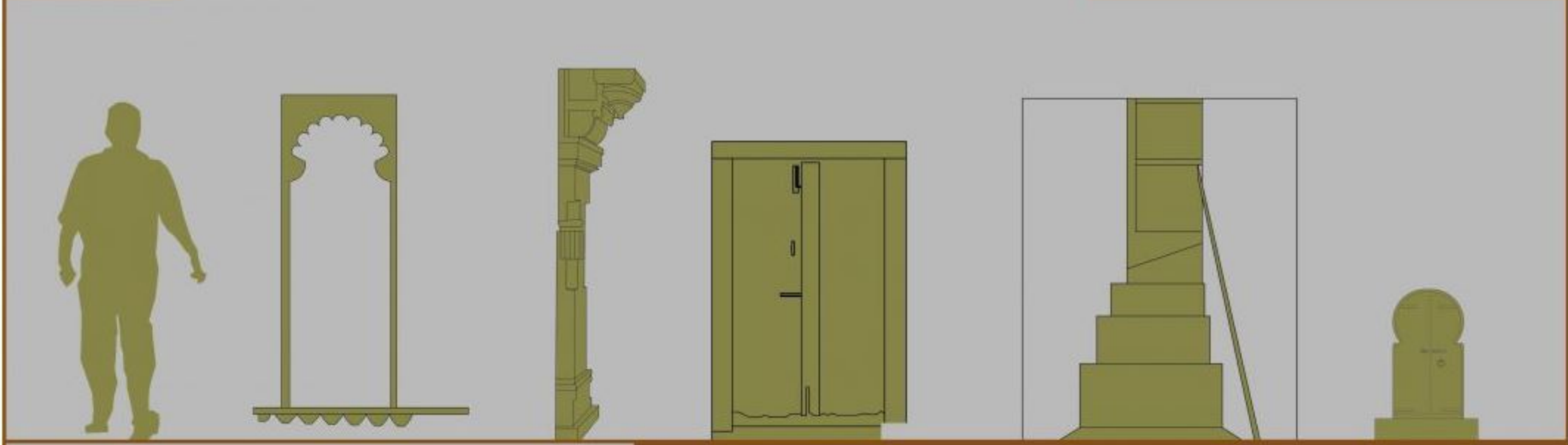
The exhibition is based on the experience of hospitality from the frugal to the royal. The visitors will know about the changes in the hospitality from frugal to royal.

### Atithi Devo Bhava

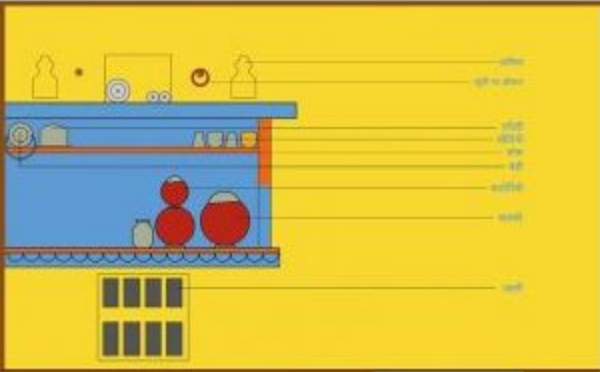


### Theme

### Curatorial Sequence



### Traditional Interior Architecture Elements



### पनीहारा

गर्मी का मौसम हो।  
चिलचिलाती धूप हो।  
पानी की आस नहीं।  
मिल जाये पनीहारा कहीं।

चलो दूँदे पानी को।  
हिम्मत ना हो चलने को।  
दिखाई दिया नीला रंग।  
चल दिये उम्मीद के संग।

खटखट दरवाज़ा खटखटाया हमने।  
पीला दो पानी काका हमे।  
अंदर को हे खिड़की खुली।  
पीलो पानी हे काकी बोली।

काका ने हे द्वार खोले।  
अंदर आओ काका बोले।  
पटाल कक्ष मे बैठाया हमे।  
पनीहारा स मिलाया हमे।

नीला हे जी रंग इसका।  
पूज्य स्थान हे जिसका।  
हमारा भगवान हे ये दाता।  
कहते हम हे इसको माता।

### THRONE

The Dining Table is situated in front of Surya Chovar. It was believed that Maharaana was a descent from the sun. It was a custom of king to worship the sun before eating.



### City Palace Object Research

### EMPHASIS



The exhibits present in the museums highlights the space. The space can be of no colour palette but the exhibits make a colour palette inside the space.

### Visual Spatial Narrative

#### VISUAL FORM



It is like a hollow cuboid from outside and the chowk is inside.

#### GEOMETRY



The basic shapes were used for construction.

#### TOLERANCE



The simple elements in the chowks gets ignored by the visitors.

#### ADAPTABILITY



The chowk is shielded by the male domains.

#### INTERSECTION



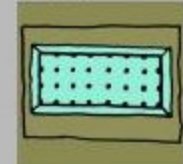
The chowk was the meeting point for the females.

#### LAYERING



Different layers of elements is coming together.

#### ORDER



The columns are arranged in an order in the centre of courtyard.

#### DISCIPLINE



Royals are on one side and general public at another.

#### MULTIPLICITY



Different elements coming together.

#### TRANSFORMATION



From complex elements to the simple.

#### INTERIORITY



The corridor covers the open space in the courtyard.

#### CONVERGENCE



All the columns are aligned in a line.

#### MOVEMENT



Linear movement in the corridors and random in the courtyard.

#### CULTURE



Tulsi and water are in the centre of the courtyard.

#### PERCEPTION



The chowk is the sacred place due to the presence of tulsi.

#### STRUCTURE



The massive structure is covering the open space.

#### COMPOSITION



Arches, Domes and stairs coming together.

#### SENSORIAL



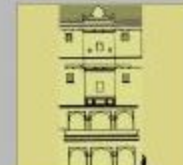
The chowk is like a womb of the mother.

#### HISTORICAL



The arches gives the significance of the historical building.

#### SCALE



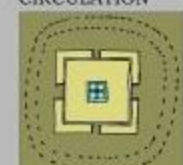
The approx human of 1.5 metres is the reference for the scale.

#### LIGHT



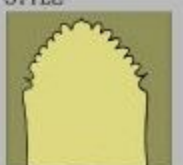
Shadow of the north elevation falls in the chowk.

#### CIRCULATION



The circulation around the central water area.

#### STYLE



The arches are present everywhere in the chowk.

#### MATERIALITY



The stone and the glasses on the windows are used.

#### ORNAMENTATION



Colourful glasses for the windows, brackets were used.

#### JUXTAPOSITION



Domes and arches coming together.

#### URBAN INTERIORS



The jalis providing a vision for the women.

#### NEIGHBOURHOOD



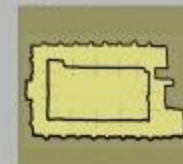
The male domain is the neighbour for the female domain.

#### JUNCTIONS



The central chowk is the meeting place for everyone.

#### ACCESS



The semi open space in the corridor gives the access to chowk.

#### CONNECTIVITY



The pavilion in the chowk combines everything.

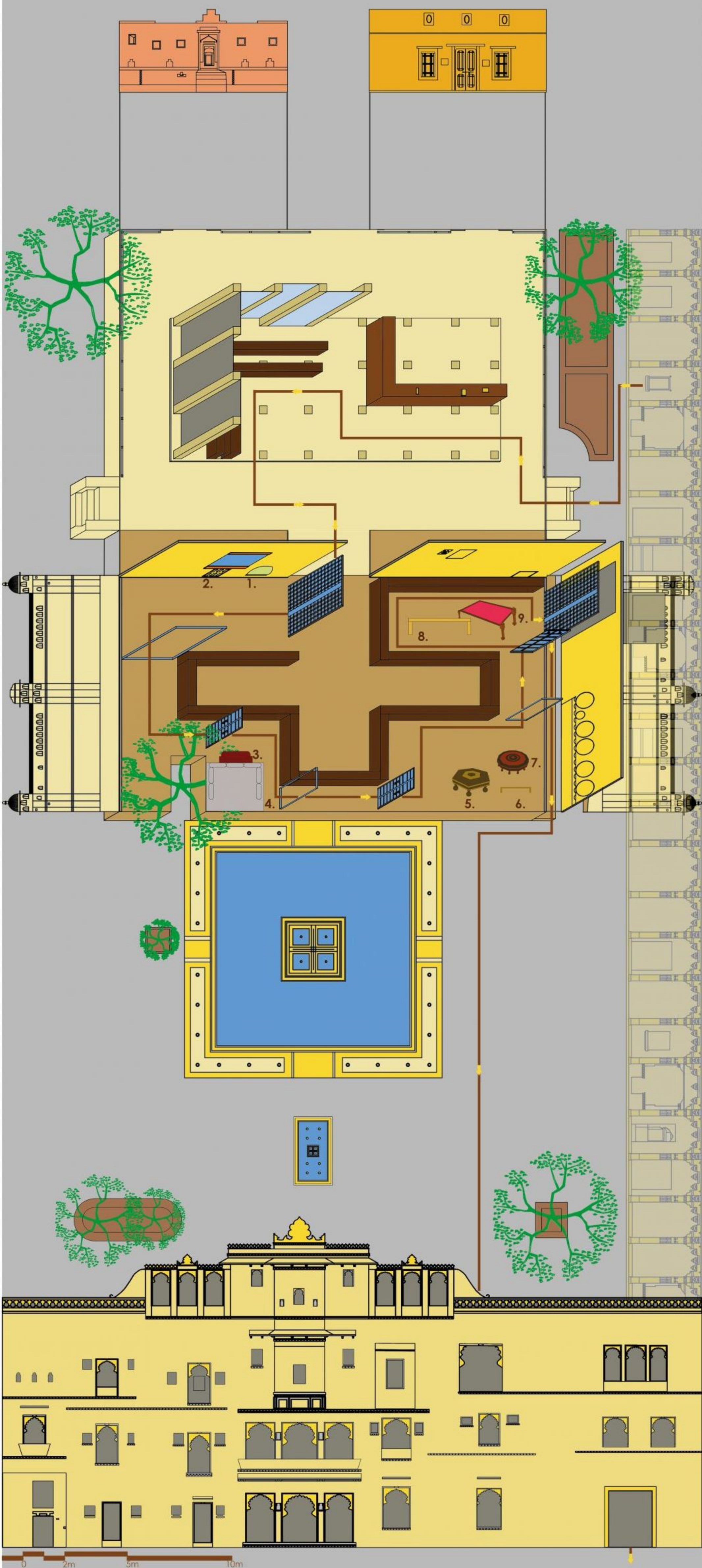
#### MEANING



The central chowk emphasises on the pavilion and tulsi.

## Site Visit Diagrams-Lakshmi Chowk

# Experiencing the Exhibition



The exhibition is based on Atithi Devo Bhava, hospitality offered by the Rajasthan. The exhibition space is divided into four sections, serving water space, baithak, kitchen and resting space. The entire exhibition is raised using a plinth upto the height of the pavilion. The exhibition starts with the reception and then the mirror installation is placed which refelects the architecture of site Lakshmi chowk and the visitors. The reflection shows that the space belongs to the visitors. The facades made up of corian material gives enclosure to the exhibition space. The four spaces are separated to each other using the bench and the doors. The doors are placed on entering each of the spaces and the door frames on exiting the spaces. The bench is used as a guiding path to the visitors as well as sitting space in the entire exhibition. For exiting the exhibition space, the ramp is provided.

