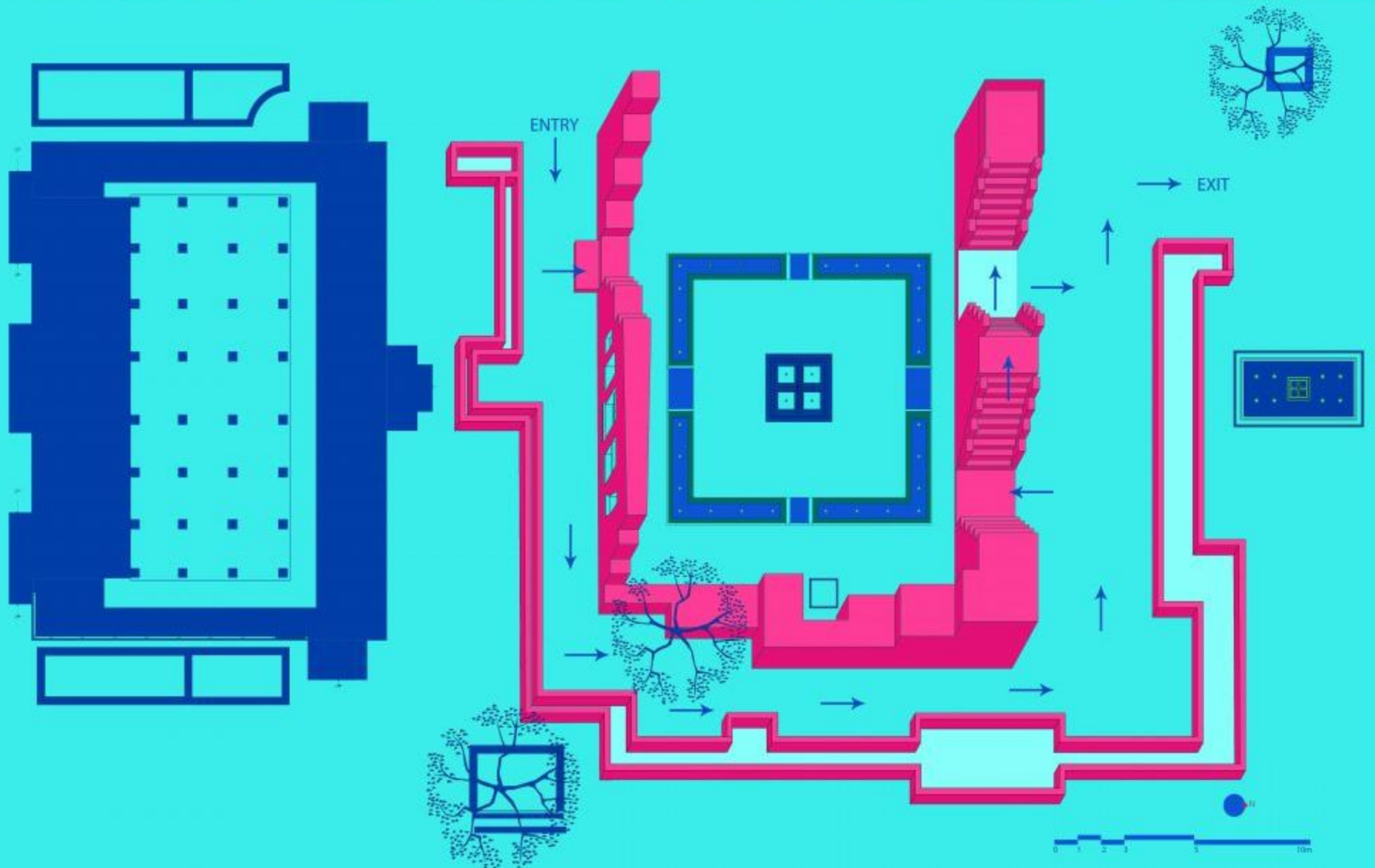


Water

A binding force



OBJECTS

Domestic



1. Aliya



2. (a) Paniyara



(b)



(c)

Semi-private



3. Pyaavu



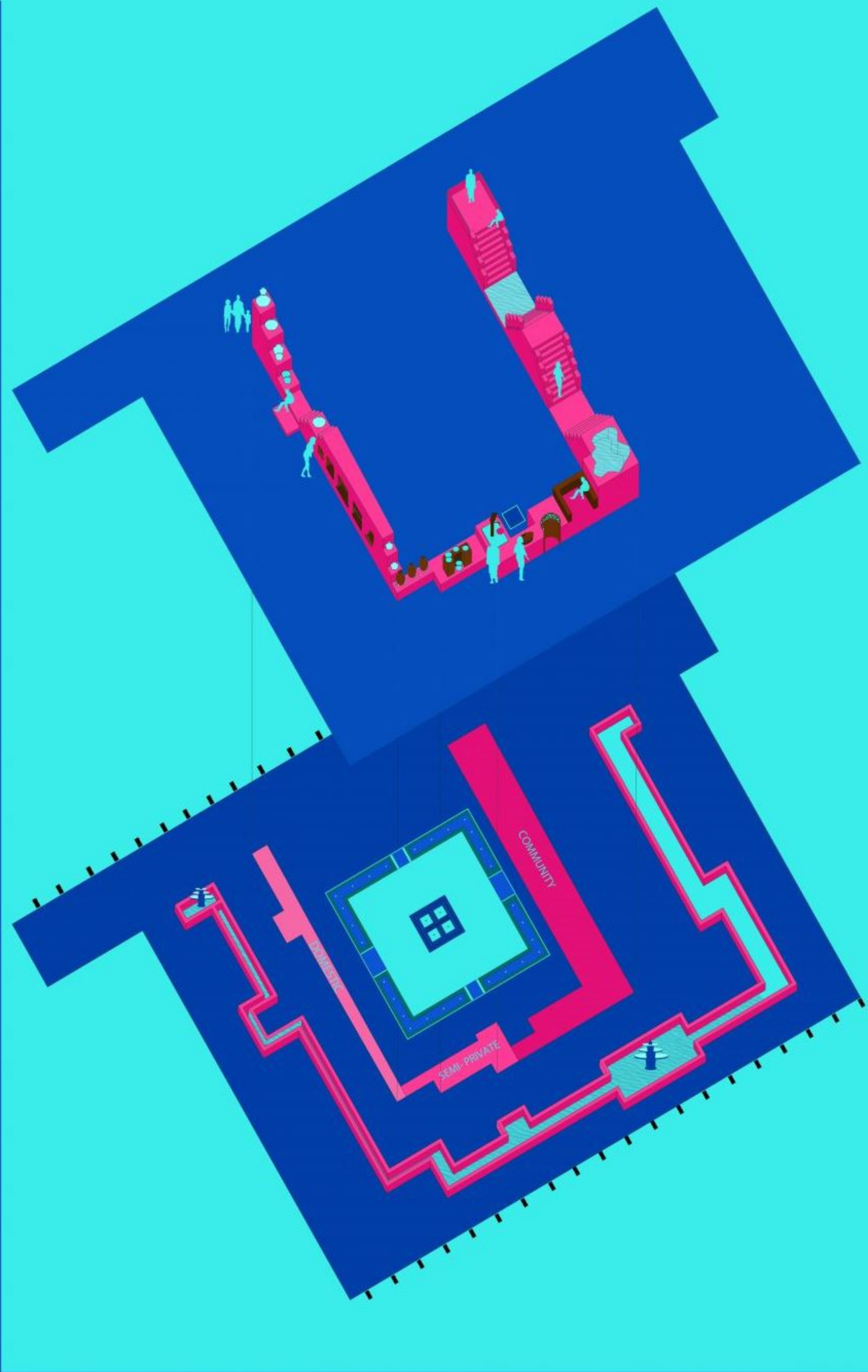
4. Ghaduchi



5. Handpump



6. Pendo



Community



7. Tanka



8. Well



9. Jhalaras



10. Stepwell

" The exhibition focuses on the objects used to store water on domestic, semi - private and community levels. The space is segregated with the help of water channel and monolithic wall of stone is used to display the objects."